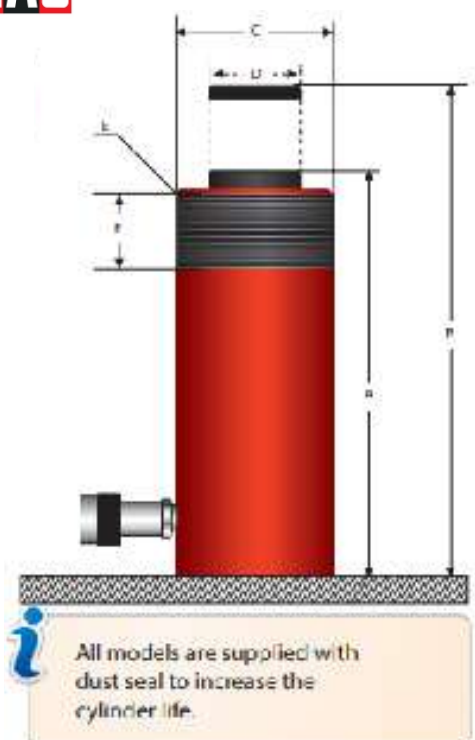


LMC - SERIES MULTIPURPOSE CYLINDERS

CAPACITY : 5 TO 15 TON
WORKING PRESSURE : 700 BAR



High strength alloy steel construction.

Hard chrome plating for cylinder bore and piston rod to resist corrosion.

Collar threads for easy mounting.

Can be operated in horizontal and vertical positions.

Fitted with standard 3/8 NPT threaded female coupler.

Model	Cylinder Capacity (Tons)	Stroke (mm)	Cylinder Effective Area (cm ²)	Oil Capacity (cc)	Retracted Height (mm)	Extended Height (mm)	Cylinder Out Dia. (mm)	Piston Rod Dia. (mm)	Collar Thread (mm)	Collar Thread Length (mm)	Kilo Newton @ 700 Bar	Weight (Kg)
					A	B						
LMC 52	5	25	7.1	18	110	135	38	25	1.1/2"-16	28	49.7	1
LMC 57		75		54	165	240						1.3
LMC 510		100		70	184	284						1.4
LMC 512		125		91	215	340						1.7
LMC 515		150		106	234	384						1.8
LMC 517		177		126	273	450						2.1
LMC 523		230		165	323	553						2.3
LMC 105	10	50	14.5	78	121	171	57	38	2.1/4"-14	26	101.5	2.2
LMC 1010		105		152	171	276						2.9
LMC 1015		150		227	247	397						4.1
LMC 1020		200		295	298	498						4.9
LMC 1025		250		373	349	599						5.6
LMC 1030		300		440	400	700						6.4
LMC 1035		350		516	450	800						7.2
LMC 155	15	50	21.2	109	149	199	69	42	2.3/4"-16	35	148.4	3.8
LMC1510		100		215	200	300						5.0
LMC1515		150		323	271	421						6.8

CAPACITY : 25 TO 100 TON
WORKING PRESSURE: 700 BAR



Lifting eyes for heavy tonnage cylinders.

Fitted with standard 3/8 NPT threaded female coupler.


Supplied with removable saddles.

vModel	Cylinder Capacity (Tons)	Stroke (mm)	Cylinder Effective Area (cm ²)	Oil Capacity (cc)	Retracted Height (mm)	Extended Height (mm)	Cylinder Out Dia. (mm)	Piston Rod Dia. (mm)	Collar Thread (mm)	Collar Thread Length (mm)	Kilo Newton @ 700 Bar	Weight (Kg)
					A	B						
LMC252	25	25	33.2	86	139	164	86	57	3 5/16"-12	54	232.2	5.3
LMC255		50		166	165	215						6.2
LMC2510		100		339	215	315						8.0
LMC2515		150		525	273	423						10.3
LMC2520		200		697	323	523						12.1
LMC2525		250		867	374	624						14.1
LMC2530		300		1033	425	725						15.5
LMC2535		350		1202	476	826						17.4
LMC 3010		30		100	44.2	440						222
LMC 3015	150		660	272		422	16					
LMC 3020	200		880	322		522	17.5					
LMC 5010	50	100	70.9	725	227	327	127	80	5"-12	55	494	19
LMC5015		150		1128	282	432						23.5
LMC5020		200		1425	323	523						27.7
LMC5030		300		2389	460	760						35
LMC10015	100	150	133	2235	286	436	178	105	6 7/8"-12	60	931	60
LMC10025		250		3459	449	699						73

LSC - SERIES

SHORT CYLINDER

CAPACITY : 10 TO 200 TON
WORKING PRESSURE : 700 BAR

300 ton cylinder with 50mm stroke is available upon request

i Ideal combination of closed height and stroke.

Compact design.

High strength alloy steel construction.

Hard chrome plating for cylinder bore and piston rod to resist corrosion and provide longer life.

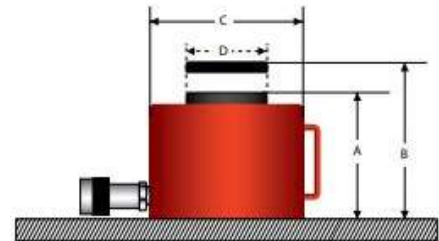
Can be operated in horizontal and vertical positions.

Fast spring retraction.

Carry handle for heavy cylinders.

Fitted with standard 3/8" NPT threaded female coupler.

Wide range of applications in various industry sectors.

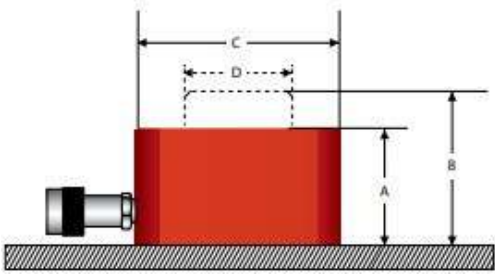


Model	Cylinder Capacity (Tons)	Stroke (mm)	Effective Area (cm ²)	Oil Capacity (cc)	Retracted Height (mm)	Extended Height (mm)	Cylinder Outer Dia (mm)	Piston Rod Dia (mm)	Kilo Newton @ 700 Bar	Weight (kg)
					A	B	C	D		
LSC1025	10	37	14.1	55	88	125	69	38	98.7	3.6
LSC1044	10	44	15.2	66	99	143	68	38	106.4	4.0
LSC2044	20	44	28.3	141.5	99	140	87	51	198.1	4.1
LSC2050		50		143	108	156				4.3
LSC3025	30	25	44.2	114	82	107	105	65	309.4	5
LSC3050		50		221	106	155				6.5
LSC5025	50	25	63.6	230	87	112	125	78	445.2	8
LSC5050		50		318	109	158				9.5
LSC10025	100	25	132.7	340	100	125	178	115	928.9	20
LSC10050		50		663	139	189				23
LSC100100	150	100	201	980	200	300	208	135	1407	36
LSC15050		50		1005	170	205				37
LSC150100	200	100	283.5	2800	205	300	245	150	202.29	62
LSC20050		50		1417	193	243				63

CAPACITY : 5 TO 150 TON
WORKING PRESSURE: 700 BAR



i Flat sides for easy insertions.



- Low clearance for confined areas.
- High strength alloy steel construction.
- Hard chrome plating for cylinder bore and piston rod to resist corrosion and provide longer life.
- Fast spring retraction.
- Can be operated in horizontal and vertical positions.
- Carry handle for heavy cylinders.
- Widely used for machinery alignments, maintenance jobs etc.

Model	Cylinder Capacity (Tons)	Stroke (mm)	Effective Area (cm ²)	Oil Capacity (cc)	Retracted	Extended	Cylinder Outer Dia (mm)	Piston Rod Dia (mm)	Width (mm)	Kilo Newton @ 700 Bar	Weight (kg)
					Height (mm) A	Height (mm) B					
LLC56	5	6	7.1	4.3	33	39	60	25	42	49.7	1.0
LLC516	5	16		4.2	50	65					
LLC1011	10	11	14.5	16	42	53	83	38	56	101.5	1.4
LLC2011	20		28.6	31	51	62					
LLC3013	30	13	42	55	59	72	117	66	95	294	4.5
LLC5016	50	16	62	99	67	83	140	70	114	434	6.9
LLC10016	100		126.7	203	86	102	178	92	152	886.9	14.5
LLC15016	150		198	317	100	116	215	115	190	1386	27

CAPACITY : 10 TO 200 TON
WORKING PRESSURE : 700 BAR



- Flexi hose connection to fix couplers due to very low height design
- Maximum strock limit marked on the piston

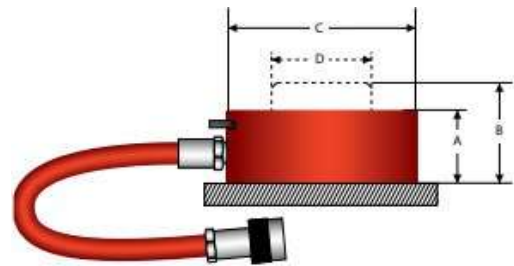
Ultra low height design without stop ring.

Single acting load return type cylinders. High strength alloy steel construction.

Hard chrome plating for cylinder bore and piston rod to resist corrosion and provide longer life.

Carry handle for heavy cylinders.

Fitted with standard 3/8" NPT threaded female coupler.

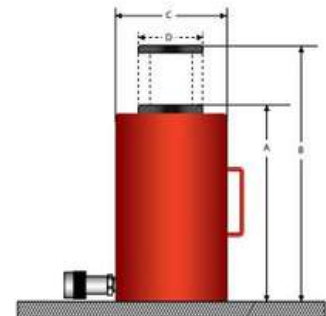


Model	Cylinder Capacity (Tons)	Stroke (mm)	Effective Area (cm ²)	Oil Capacity (cc)	Retracted Height (mm)	Extended Height (mm)	Cylinder Outer Dia (mm)	Piston Rod Dia (mm)	Kilo Newton @ 700 Bar	Weight (kg)
					A	B	C	D		
LBJ1010	10	10	15.9	16	30	40	85	45	111.3	1.5
LBJ2010	20		31.2	31	35	45	100	63	218.4	2
LBJ3010	30		44.2	45	40	50	120	75	309.4	3.5
LBJ5010	50		78.5	79	50	60	155	100	549.5	7.5
LBJ10010	100		153.9	154	70	80	210	140	1077.3	19
LBJ15010	150		227	227	75	85	260	170	1589	31
LBJ20010	200		314.2	314	80	90	300	200	2199.4	45



Cylinders are featured with centre hole through the entire cylinder body

Center tube locking bush for 10ton and 13Ton cylinders



High strength alloy steel construction.

Hard chrome plating for cylinder bore, centre tube and piston rod to resist corrosion.

Quick spring retraction.

Can be operated in horizontal and vertical positions.

Carry handle for heavy cylinders.

Fitted with standard 3/8" NPT threaded female coupler.

Supplied with removable saddles.

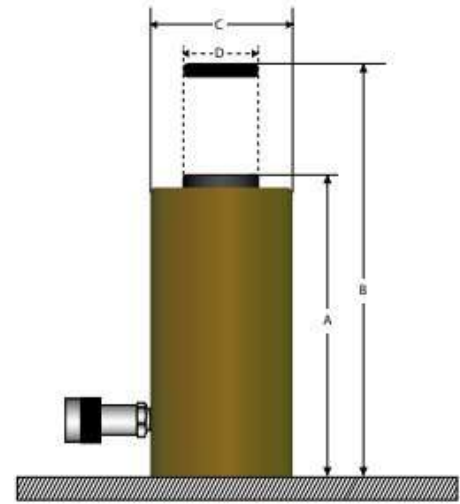
Widely used for applications like wire rope pulling, prestressing, pully removing etc.

Model	Cylinder Capacity (Tons)	Stroke (mm)	Effective Area (cm ²)	Oil Capacity (cc)	Retracted Height (mm)	Extended Height (mm)	Cylinder Outer Dia (mm)	Piston Rod Dia (mm)	Center Hole Dia (mm)	Kilo Newton @ 700 Bar	Weight (kg)
					A	B	C	D	E		
LCH1041	10	41	17.6	70.5	121	162	70	35	20	123.2	2.8
LCH1308	13	8	18.4	14.7	55	63	70	35	19.5	128.8	1.7
LCH1375		75	18.4	150	184	259	70	35	19.5	128.8	4.7
LCH2050	20	50	30.7	476	163	210	98	55	27	214.9	7.7
LCH2015		154			307	461	98	54.1	27		
LCH3063	30	63	46.6	6	179	241	118	65	33	326.2	12
LCH3015		154		722	331	485	114	63.5	33		22
LCH6075	60	75	82.3	626	247	323	159	92	53.8	576.1	28
LCH6015		153		1259	324	477	159	92	53.8		35.4
LCH10075	100	75	135.2	1337	255	330	212	127	79	946.4	63
LCH10015		150		1650	380	530	217	127	80		98

LAC - SERIES

ALUMINIUM CYLINDER

CAPACITY : 20 TO 150 TON
WORKING PRESSURE : 700 BAR



Light weight design, almost half the weight of steel cylinders.

High strength aluminium alloy construction.

Hard chrome plating for piston rod to resist corrosion.

Quick spring retraction.

Can be operated in horizontal and vertical positions.

Fitted with standard 3/8" NPT threaded female coupler.

Model	Cylinder Capacity (Tons)	Stroke (mm)	Effective Area (cm ²)	Oil Capacity (cc)	Retracted Height (mm)	Extended Height (mm)	Cylinder Outer Dia (mm)	Piston Rod Dia (mm)	Kilo Newton @ 700 Bar	Weight (kg)
					A	B				
LAC2050	20	50	31.2	156	174	224	85	50	218.4	3.6
LAC2010		100		312	224	324				4.1
LAC2015		150		468	274	424				4.5
LAC3050	30	50	44.2	220	181	231	100	60	309.4	4.5
LAC3010		100		440	231	331				5.2
LAC3015		150		660	281	431				5.9
LAC5050	50	50	70.8	355	186	236	130	80	495.6	8.5
LAC5010		100		710	236	336				9.8
LAC5015		150		1065	286	436				11.1
LAC10050	100	50	143.1	715	221	271	180	110	1001.7	17.5
LAC10010		100		1431	271	371				19.7
LAC10015		150		2147	321	471				22
LAC15050	150	50	227	1135	243	293	230	140	1589	25.5
LAC15010		100		2270	293	393				30
LAC15015		150		3405	343	493				34

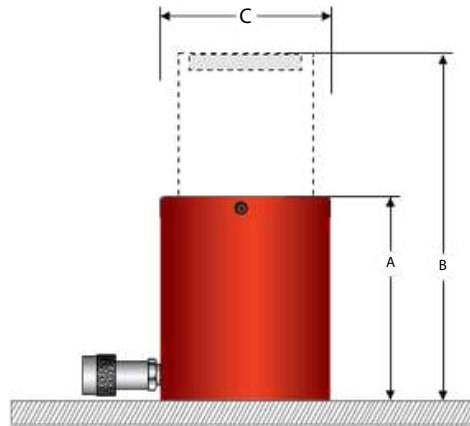


High strength alloy steel construction.

Fitted with standard 3/8" NPT threaded female coupler.

Ideally suited for construction , civil engineering, heavy fabrication & maintenance applications.

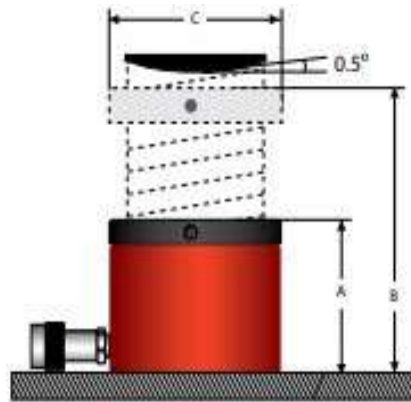
*Higher capacity on request.



Model	Cylinder Capacity (Tons)	Stroke (mm)	Effective Area (cm ²)	Oil Capacity (cc)	Retracted Height (mm)	Extended Height (mm)	Cylinder Outer Dia. (mm)	Piston Dia. (mm)	Kilo Newton @ 700 Bar	Weight (kg)
					A	B		C		
LSG20015	200	150	266	3989	316	466	235	135	1862	91
LSG20030	200	300	266	7977	466	766	235	135	1862	146
LSG25015	250	150	362.7	5442	335	485	275	165	2539	136
LSG25030	250	300	362.7	10883	485	785	275	165	2539	207
LSG30015	300	150	452	6786	412	562	310	200	3164	232
LSG30030	300	300	452	13571	562	862	310	200	3164	303
LSG40015	400	150	572	8580	475	625	350	215	4004	330
LSG40030	400	300	572	17230	625	925	350	215	4004	421
LSG50015	500	150	730.6	10959	519	669	400	250	5114	480
LSG50030	500	300	730.6	21918	669	969	400	250	5114	599
LSG60015	600	150	855.3	12829	529	679	430	270	5987	565
LSG60030	600	300	855.3	25659	679	979	430	270	5987	701
LSG80015	800	150	1163	17450	574	724	505	320	8141	868
LSG80030	800	300	1163	34900	724	1024	505	320	8141	1058
LSG100015	1000	150	1450	21766	664	814	560	345	10150	1213
LSG100030	1000	300	1450	43532	814	1114	560	345	10150	1439

LLR - SERIES
LOCK NUT
CYLINDER

CAPACITY : 60 TO 500 TON
WORKING PRESSURE : 700 BAR



Single acting and load return type.

This design features a threaded piston rod & lock ring when the lock ring is screwed down & engaged with the cylinder body, the load can be held mechanically for extended periods.

Fitted with standard 3/8" NPT threaded female coupler.

These cylinders are ideally suited to bridge construction & maintenance & jacking applications requiring safe extended load holding.

Model	Cylinder Capacity (Tons)	Stroke (mm)	Effective Area (cm ²)	Oil Capacity (cc)	Retracted Height	Extended Height	Cylinder Outer Dia (mm)	Kilo Newton @700Bar	Weight (kg)
					(mm) A	(mm) B			
LLR6050	60	50	86.6	432	125	175	140	606	15
LLR10050	100	50	143.1	734	137	187	175	1001	26
LLR16045	160	45	227	1022	148	193	220	1589	44
LLR20045	200	45	283.4	1275	155	200	245	1984	57
LLR25045	260	45	363	1650	159	204	275	2541	74
LLR40045	400	45	551.5	2517	178	223	350	3861	134
LLR50050	520	45	730.3	3287	192	237	400	5112	189

CAPACITY : 50 TO 1000 TON
WORKING PRESSURE : 700 BAR

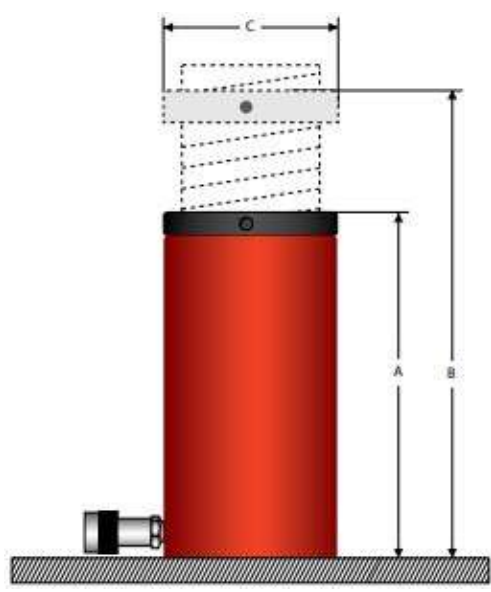


High strength alloy steel construction.

Over flow port for stroke limit.

Single acting load return type.

Hard chrome plating for cylinder bore, Plain & threaded piston rod to resist corrosion



Model	Cylinder Capacity (Tons)	Stroke (mm)	Effective Area (cm ²)	Oil Capacity (cc)	Retracted Height (mm)	Extended Height (mm)	Cylinder Outer Dia (mm)	Kilo Newton @700Bar	Weight (kg)
					A	B			
LLG5050	50	50	70.9	355	164	214	125	496.3	15
LLG5010		100		709	214	314			
LLG5015		150		1064	264	414			
LLG10050	100	50	132.7	664	187	237	165	928.9	30
LLG10010		100		1327	237	337			
LLG10015		150		1991	287	437			
LLG15010	150	100	198.6	1986	259	359	205	1390	66
LLG15015		150		2979	309	459			
LLG20050	200	50	265.6	1330	243	293	235	1859.2	83
LLG20015		150		6648	343	493			
LLG30015	300	150	456.2	6843	395	545	310	3193.4	233
LLG40015	400	150	559.9	8399	435	585	350	3919.3	327
LLG50015	500	150	730.3	10953	475	625	400	5112.1	467
LLG60015	600	150	854.9	12823.5	495	645	430	5984.3	563
LLG80015	800	150	1163.6	17454	555	705	505	8145.2	871
LLG100015	1000	150	1451.5	21772	595	745	560	10160.5	1143

LDC - SERIES

DOUBLE ACTING
CYLINDER

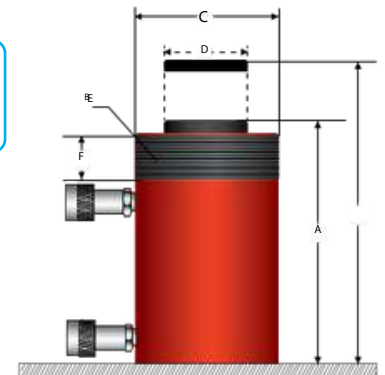
CAPACITY : 5 TO 1000 TON
WORKING PRESSURE: 700 BAR



Saddle type for 50ton & above



Saddle type for 10ton to 30ton.

Double acting cylinder must be powered by a pump with 4-way valve.

High strength alloy steel construction.

Hard chrome plating for cylinder bore and piston rod to resist corrosion.

Oil assisted retraction type.

Collar threads are available for models upto 150 tons for easy mounting.

Fitted with overload safety valve

Can be operated in horizontal and vertical positions.

Heavy models are with handling eyes.

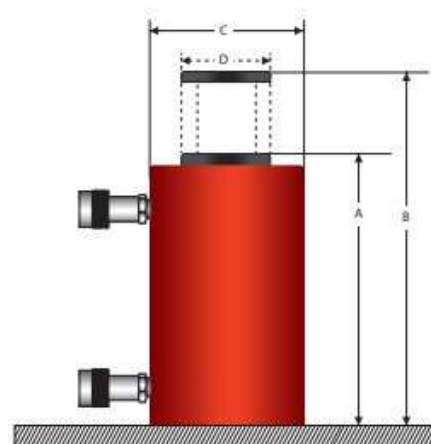
Fitted with standard 3/8" NPT threaded female coupler.

Supplied with removable saddles.

Model	Cylinder Capacity (Tons)	Stroke (mm)	Effective Area (cm ²)	Oil Capacity (cc)	Retracted Height (mm)	Extended Height (mm)	Cylinder Outer Dia (mm)	Piston Rod Dia (mm)	Collar Thread	Collar Thread Length (mm)	Kilo Newton @ 700 Bar	Weight (kg)
					A	B						
LDC1015	10	150	15.2	228	314	464	62	44	M60 X P2.0	30	106	4.9
LDC1030		300		456	464	764						9
LDC2015	20	150	33.18	498	363	513	88	65	M85 X P2.5	50	232	13.5
LDC2030		300		996	513	813						20
LDC3015	30	150	44.18	663	398	548	105	75	M100X P2.5	55	309	24
LDC3030		300		1326	548	848						33
LDC5015	50	150	70.88	1063	343	493	128	95	M127X P2.5	45	496	30
LDC5030		300		2126	493	793						50
LDC10015	100	150	132.7	1990	352	502	178	130	M175X P3	50	929	64
LDC10030		300		3980	502	802						83
LDC15015	150	150	213.8	3207	381	531	218	165	M215X P3.5	55	1497	95
LDC15030		300		6414	531	831						127
LDC20015	200	150	283.5	4253	400	550	248	190	M245X P4	60	1985	129
LDC20030		300		8506	550	850						169
LDC30015	300	150	433.7	6506	433	583	315	235	M315X P4	70	3036	230
LDC50015	500	150	706.8	10604	475	625	405	300	*	*	4948	490
LDC80015	800	300	1164.2	17462	550	700	525	385	*	*	8149	782
LDC100015	1000	300	1452.2	21783	610	760	585	430	*	*	10165	1216



i Double acting cylinder must be powered by a pump with 4-way valve.



High strength alloy steel construction.

Hard chrome plating for cylinder bore, center tube and piston rod to resist corrosion.

Oil assisted retraction type.

Can be operated in horizontal and vertical positions.

Featured with center hole through the entire cylinder body.

Heavy models are with handling eyes. Fitted with standard 3/8" NPT threaded female coupler.

Supplied with removable saddles.

Model	Cylinder Capacity (Tons)	Stroke (mm)	Effective Area (cm ²)	Oil Capacity (cc)	Retracted Height (mm)	Extended Height (mm)	Cylinder Outer Dia (mm)	Piston Rod Dia (mm)	Center Hole Dia (mm)	Kilo Newton @ 700 Bar	Weight (kg)
					A	B	C	D	E		
LDH3017	30	178	47.7/32.4	849	331	509	114	63	34	334.3/226.8	21
LDH3025	30	254	47.7/32.4	1202	431	685	114	63	34		27
LDH6075	60	89	84.2/56.2	749	248	337	160	95	53	589.4/393.4	28
LDH6015	60	165	84.2/56.2	1389	324	489	160	95	53		35
LDH6025	60	257	84.2/56.2	2115	438	695	160	95	53		45
LDH10075	100	76	135.2/87	1027	255	331	212	127	78	946.4/609	61
LDH10015	100	153	135.2/87	2068	343	496	212	127	78		79
LDH10025	100	257	135.2/87	3420	460	717	212	127	78		105
LDH15020	150	203	204.1/102.6	4144	349	552	247	130	79	1428.7/718	111

LDOC - SERIES

DOUBLE ACTING
HEAVY CYLINDER

CAPACITY : 100 TO 1000 TON
WORKING PRESSURE: 700 BAR

LIFTON

Hydraulic Power Systems

High strength alloy steel construction.

Hard chrome plating for cylinder bore and piston rod to resist corrosion.

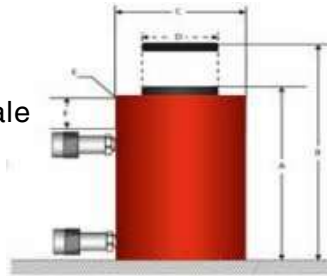
Oil assisted retraction type.

Fitted with overload safety valve can be operated in horizontal and vertical positions.

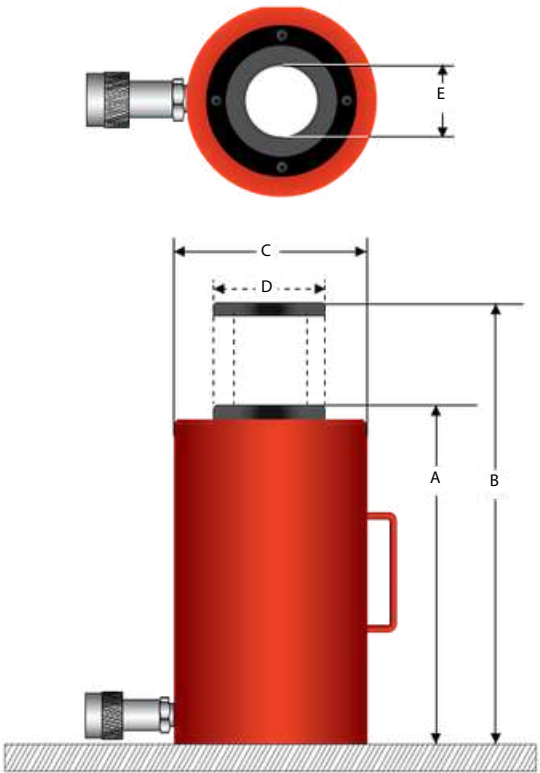
Heavy models are with handling eyes.

Fitted with standard 3/8" NPT threaded female coupler.

Higher capacity on request.



Model	Cylinder Capacity Tons	Stroke (mm)	Effective Area (cm ²)	Oil Capacity (cc)	Retracted Height (mm)	Extended Height (mm)	Cylinder Outer Dia (mm)	Piston Rod Dia (mm)	Mounting Hole PCD	Base Hole Thread	Weight (kg)
					A	B					
LDOC10010	100	100	132.7	1327	229	329	165	95	95	M12	34
LDOC10015		150		1991	282	432					40
LDOC10020		200		2655	329	529					46
LDOC10030		300		3982	429	729					79
LDOC15010	150	100	201	2010	246	346	205	115	130	M12	52
LDOC15015		150		3015	296	446					65
LDOC15030		300		6030	446	746					105
LDOC20015	200	150	266	4031	312	462	235	135	165	M12	91
LDOC20030		300		8061	462	762					146
LDOC25015	250	150	362.7	5444	335	485	275	165	180	M12	136
LDOC25030		300		10887	485	785					207
LDOC30015	300	150	452.2	6783	422	572	310	200	180	M16	184
LDOC30030		300		13566	572	872					303
LDOC40015	400	150	572	7580	474	624	350	215	205	M16	330
LDOC40030		300		15160	624	924					421
LDOC50015	500	150	730.2	10953	519	669	400	250	250	M24	480
LDOC50030		300		21906	669	969					559
LDOC60015	600	150	855	12824	529	679	430	265	275	M24	565
LDOC60030		300		25647	679	979					710
LDOC80015	800	150	1163	17454	584	734	505	320	330	M24	868
LDOC80030		300		34908	734	1034					1058
LDOC100015	1000	150	1017	21773	464	814	560	345	375	M24	1213
LDOC100030		300		43545	814	1114					1439



Light In weight design.

Quick spring retraction.

Can be operated in horizontal and vertical positions.

Fitted with standard 8/3" NPT threaded female coupler.

Widely used for applications like wire rope pulling, prestressing, pully removing etc.



Model	Cylinder Capacity (Tons)	Stroke (mm)	Effective Area (cm ²)	Oil Capacity (cc)	Retracted	Extended	Cylinder Outer Dia (mm)	Piston Rod Dia (mm)	Center Hole Dia (mm)	Kilo Newton @ 700 Bar	Weight (kg)
					Height (mm)	Height (mm)					
					A	B	C	D	E		
LACH205		50		165	188	238					5.2
LACH2010	20	100	32.7	397	251	351	100	55	27	228.9	6.1
LACH2015		150		493	315	465					7.1
LACH305		50		257	208	258					8
LACH3010	30	100	51.1	512	267	367	130	70	34	357.7	9.5
LACH3015		150		767	333	483					11.2
LACH605		50		425	251	301					16.2
LACH6010	60	100	84.7	848	315	415	180	100	54	592.9	19.5
LACH6015		150		1272	380	530					25.6